

## SAILING INSTRUCTIONS

### Open Dutch Masters Championship

### ILCA 6 and 7

Organised by ZV Belterwiede

Under the auspices of the Royal Netherlands Watersport Association (RNWA)

From 18<sup>th</sup> May to 21<sup>st</sup> May (inclusive) 2023

Location: Beulaker Wiede

---

[NP] denotes that a breach of this rule will not be grounds for a protest by a boat. This changes RS 60.1(a)

#### 1. RULES

- 1.1 The event will be governed by the rules as defined in *The Racing Rules of Sailing* (RRS). The Prescriptions of the RNWA will apply and can be found at [www.sailing.org/documents/racingrules/national\\_prescriptions.php](http://www.sailing.org/documents/racingrules/national_prescriptions.php)
- 1.2 Appendix P will apply as amended in instruction 15.
- 1.3 All competitors and support persons must adhere to the corona rules of the Dutch government for the for the rules see <https://www.government.nl/topics/coronavirus-covid-19>.

#### 2. CHANGES TO SAILING INSTRUCTIONS

Any change to the sailing instructions will be posted before 09:00 hours on the day it will take effect, except that any change to the schedule of races will be posted by 20:00 hours on the day before it will take effect.


#### 3. NOTICES TO COMPETITORS

- 3.1 Notices to competitors will be posted on the official notice board located near the regatta office.
- 3.2 The regatta office is located at the following address: Veneweg 292, 7946 LX, Wanneperveen. Phone : +31 6 25376921 (only during the event)

#### 4. CODE OF CONDUCT

[DP] Competitors and support persons shall comply with reasonable requests from race officials.

#### 5. SIGNALS MADE ASHORE

- 5.1 Signals made ashore will be displayed at flag mast located near the race office.
- 5.2 When flag AP  is displayed ashore, '1 minute' is replaced with 'not less than 30 minutes' in Race Signals AP.

#### 6. SCHEDULE OF RACES

##### 6.1 Dates and number of races

Date:	Class: ILCA 7	Class: ILCA 6
18th May	2 races	2 races
19th May	3 races	3 races
20th May	3 races	3 races
21st May	2 races	2 races

One extra race per day may be sailed, provided that no class becomes more than one race ahead of schedule. This change of schedule will be made according SI 2.

6.2 The scheduled time of the warning signal of the races on each day is:

18th May	Race 1	ILCA 7	Warning signal 12:55 hours
		ILCA 6	5 minutes after a valid start of the ILCA 7
	Race 2	ILCA 7	A.s.a.p. after the finish of Race 1
		ILCA 6	A.s.a.p. after the finish of Race 1
19th May	Race 3	ILCA 7	Warning signal 10:25 hours
		ILCA 6	5 minutes after a valid start of the ILCA 7
	Race 4	ILCA 7	A.s.a.p. after the finish of Race 3
		ILCA 6	A.s.a.p. after the finish of Race 3
	Race 5	ILCA 7	A.s.a.p. after the finish of Race 4
		ILCA 6	A.s.a.p. after the finish of Race 4
20th May	Race 6	ILCA 7	Warning signal 10:25 hours
		ILCA 6	5 minutes after a valid start of the ILCA 7
	Race 7	ILCA 7	A.s.a.p. after the finish of Race 6
		ILCA 6	A.s.a.p. after the finish of Race 6
	Race 8	ILCA 7	A.s.a.p. after the finish of Race 7
		ILCA 6	A.s.a.p. after the finish of Race 7
21st May	Race 9	ILCA 7	Warning signal 10:25 hours
		ILCA 6	5 minutes after a valid start of the ILCA 7
	Race10	ILCA 7	A.s.a.p. after the finish of Race 9
		ILCA 6	A.s.a.p. after the finish of Race 9

6.3 To alert boats that a race or sequence of races will begin soon, an orange flag will be displayed with one sound for at least five minutes before a warning signal is displayed.

6.4 On the last day of the regatta no warning signal will be made after 14:00 hours.

## 7 CLASS FLAGS

Class: Flag:

ILCA 7 D

ILCA 6 G

## 8 RACING AREAS

Attachment A shows the location of racing area.

## 9 THE COURSES

9.1 The diagrams in Attachment B show the courses, the order in which marks are to be passed, and the side on which each mark is to be left. The approximate course length will be 45 minutes.

9.2 Course numbers will be displayed during the starting sequence for every class separately on a board on the port side of the starting vessel.

## 10 MARKS

- 10.1 Mark 1,2,3p/3s,4p/4s, 5: will be yellow cilinders Mark 1A: will be a smaller red cilinder
- 10.2 The starting marks: will be a buoy with staf displaying an orange flag and an orange flag on the starting vessel.
- 10.3 The finishing marks: will be a buoy with staff displaying an blue flag and a **blue** flag on the finishing vessel.

## 11 ABANDONING A RACE

Under RRS 32.1, the race committee may abandon the race because of a major wind shift or irregular winds or when the wind speed drops below 5 knots (2.5 m/s) as measured by the race committee. Any action or no action by the race committee under this instruction will not be grounds for redress under RRS 60.1(b).

## 12 THE START

- 12.1 Races will be started by using rule 26 RRS with the warning signal given 5 minutes before the starting signal.
- 12.2 The starting line will be between a buoy with staff displaying an orange flag at the port side and an **orange** flag on the starting vessel at the starboard side.
- 12.3 (DP, NP) Boats whose warning signal has not been made shall avoid the starting area during the starting sequence for other races.
- 12.4 A boat starting later than 4 minutes after her starting signal will be scored Did Not Start. This changes RRS A4 and A5.
- 12.5 An inner limit mark (ILM) may be used. If an ILM is used the string line as described in definition: *Sail the Course* must not cross the line between the ILM and the staff on the committee signal boat displaying the orange flag. Mark ILM is a starting mark as prescribed in the preamble to RRS, part 2, section C.
- 12.6 For the purposes of RRS 30.4 a race is 'restarted or resailed' when it has the same race number as a previously abandoned or recalled race, even if the race is resailed on a later date

## 13 CHANGE OF THE NEXT LEG OF THE COURSE

- 13.1 To change the next leg of the course, the race committee will move the original mark (or the finishing line) to a new position.
- 13.2 Except at a gate, boats shall pass between the race committee boat signalling the change of the next leg and the nearby mark, leaving the mark to port and the race committee boat to starboard. This changes RRS 28.1.
- 13.3 The course may be shortened to finish at a rounding mark or a gate provided 4 or more legs have been sailed on an outer course and at least 3 or more legs have been completed on an inner course (excluding the leg between mark 1 and mark 1A).

## 14 THE FINISH

The finishing line will be between a buoy with a staff displaying an blue flag and the **blue** flag on the finishing vessel

## 15 PENALTY SYSTEM

- 15.1 Appendix P will apply with the following changes:

(a) If a first penalty is signalled after a boat has crossed the finish line, a scoring penalty of 10% of the score for did not finish rounded to a whole number (rounding 0.5 upward) will be added to the boats score. However, she shall not be scored worse than DSQ.

(b) RRS P3 is replaced with “If a boat has been penalised for the first time under RRS P1.2 and the race is restarted or resailed the penalty is cancelled, but it is counted to determine the number of times she has been penalised during the regatta. This changes RRS 36.”

(c) RRS P4 is replaced with “An action by the jury under RRS P1.2 shall not be grounds for a request for redress by a boat. The jury may initiate a redress hearing and may give redress for an action under RRS P1.2 by a member of the jury or its designated observer”. This changes RRS 60.1(b).

15.2 A boat that has either retired from or been disqualified in a race for a second or subsequent breach of RRS 42 shall not compete in that race if it is restarted or resailed. For the purposes of this instruction a race is ‘restarted or resailed’ when it has the same race number as a previously abandoned or recalled race, even if the race is resailed on a later date.

If she competes in that race, she shall be disqualified without a hearing and that score shall not be excluded (DNE) and the jury will consider calling a hearing under RRS 69.1(a). This means:

Yellow Flag	Immediate penalty	After a general recall or a postponement or an abandonment	No action by boat	After a general recall or a postponement or an abandonment
1e	1st Two turns/ 10% ( SI 15.1(a))	Can restart	DSQ	Shall not restart if notified of the DSQ
2e	Retire (RET)	Shall not restart	DNE Race	Can not restart
3e	Retire (DNE)	Shall not restart	DNE Event	Can not restart

## 16 TIME LIMITS AND TARGET TIMES

16.1 Time limits are as follows:

Class	Time limit Mark 1	Time limit	Target time
ILCA 7	30 minutes	75 minutes	45 minutes
ILCA 6	30 minutes	75 minutes	45 minutes

If no boat has passed Mark 1 within the Mark 1 time limit the race will be abandoned.

16.2 Failure to meet the target time will not be grounds for redress. This changes RRS 62.1(a)

16.3 Boats failing to finish within 15 minutes after the first boat sails the course and finishes will be scored Did Not Finish without a hearing. This changes RRS 35, A4 and A5.

## 17 HEARING REQUEST

17.1 Hearing request forms are available at the regatta office. The regatta office is located at the following address: Veneweg 292, 7946 LX, Wanneperveen. Phone :

- +31 6 25376921 (only during the event). Protests and request for redress or reopening shall be delivered there within the appropriate time limit.
- 17.2 The protest time limit is **60** minutes after the last boat has finished the last race of the day or the race committee signals no more racing today, whichever is later.
- 17.3 Notices will be posted within **30** minutes of the protest time limit to inform competitors of hearings in which they are parties or named as witnesses. Hearings will be held in the jury room, located at the following address: Veneweg 292, 7946 LX, Wanneperveen. Phone : +31 6 25376921 (only during the event), beginning a.s.a.p. after the last race of the day.
- 17.4 Notices of protests by the race committee or jury will be posted to inform boats under rule 61.1(b) RRS.
- 17.5 Arbitrage as is described in appendix T will be offered before a protest hearing.
- 17.6 A list of boats that, under SI 15, have been penalized for breaking RRS 42 will be posted.
- 17.7 A request for a decision in writing has to be delivered within one hour after the decision is given verbally. This changes RRS 65.2.
- 17.8 A request for correction of an error in the published results has to be delivered to the R.C. within the protest time limit of the last scheduled day of racing or within 60 minutes after posting of the results, if this is later. The boat shall complete a scoring enquiry form, available at the race office. When the request is not granted, the protest time limit is 30 minutes after the boat is informed that the request is not granted. This changes RRS 62.2.

## 18 WHISTLE SYSTEM

To encourage boats to take penalties afloat, jury members may blow a whistle when they see what they believe to be a breach of a rule.

## 19 SCORING

- 19.1 Four races are required to be completed to constitute a series.
- 19.2 (a) When fewer than 5 races have been completed, a boat's series score will be the total of her Race scores.
- (b) When 5, 6, 7 or 8 races have been completed, a boat's series score will be the total of her race scores excluding her worst score.
- (c) When 9 or 10 races have been completed, a boat's series score will be the total of her race scores excluding her worst 2 scores.

19.3 Women's results will be determined by the series score in the combined Men & Women competition.

(Note: These results will be extracted from the overall results and published without recalculation.)

19.4 If the organizing authority decides that different age groups will sail together the result for each age group will be determined by the series score in the combined fleet. (Note: this result will be extracted from the overall result and published without recalculation)

## 20 SAFETY (NP, DP)

- 20.1 RRS 40.1 is applicable: Each Competitor shall wear a personal flotation device except briefly while changing or adjusting clothing or personal equipment. Wet suits and dry suits do not constitute adequate personal buoyancy.
- 20.2 Competitors who require assistance should wave one arm with hand open. If no assistance is required, the arm should be waved with fist closed.
- 20.3 If considered necessary a competitor may be ordered by a race organization vessel to abandon his or her boat and board a patrol vessel.
- 20.4 A boat that retires from a race shall notify a race committee, safety/patrol or jury boat as soon as possible and the race office immediately after returning to the shore.

## 21 & 22 SPARE

### 23 OFFICIAL BOATS

Official boats will be marked as follows: white flag with “RC” or “JURY”

### 24 [DP] SUPPORT BOATS

Team leaders, coaches and other support personnel shall stay outside areas where boats are racing from the time of the preparatory signal for the first class to start until all boats have finished or retired or the race committee signals a postponement, general recall or abandonment.

### 25 [DP] TRASH DISPOSAL

When Covid19 National regulations apply no Trash may be placed aboard support and race committee boats. If these are not applicable it can be placed aboard support and race committee boats.

## 26–31 SPARE

### 32 ORGANISATION

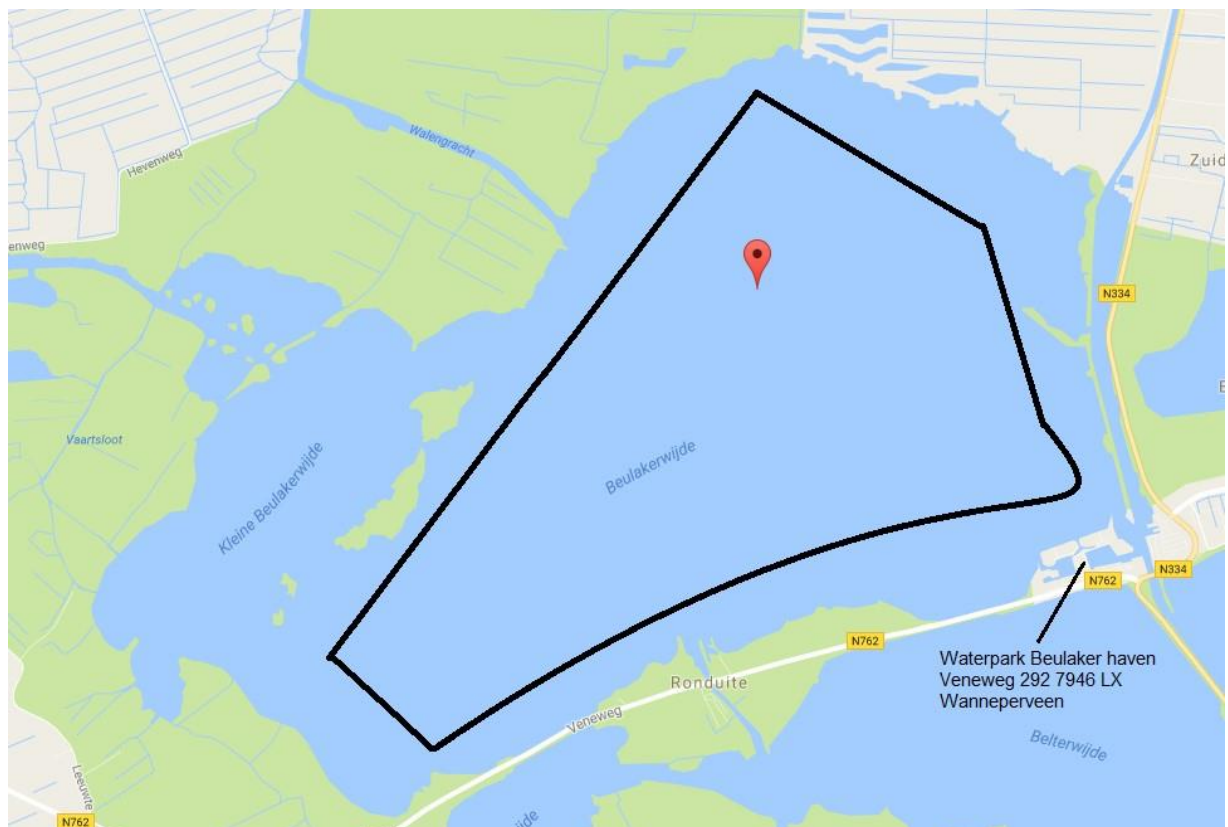
The chairman of the Race committee is Dirk Evers

The chairman of the protest committee is Joep Straus

The chairman of the Technical committee is to be decided.

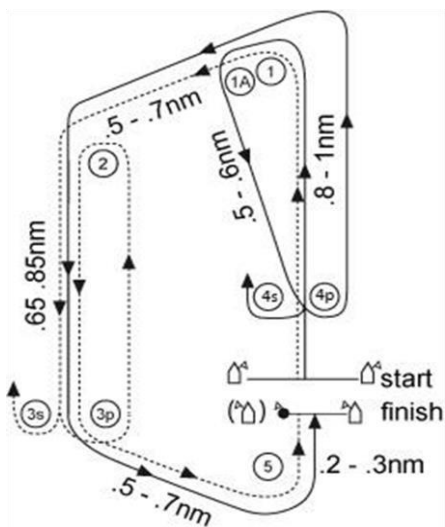
## Attachment A

### RACING AREA



## Attachment B

### COURSE DIAGRAM



#### Course 1 Outer Loop:

Start – 1 – 1A – 2 – 3p/3s – 2 – 3p/3s – 5 - Finish

#### Course 1 Inner Loop:

Start – 1 – 1A – 4p/4s – 1 – 1A – 2 – 3p/3s – 5 – Finish

#### Course 2 Outer Loop:

Start – 1 – 1A – 2 – 3p/3s – 2 – 3p/3s – 2 – 3p/3s – 5 – Finish

#### Course 2 Innerloop:

Start – 1 – 1A – 4p/4s - 1 – 1A – 4p/4s – 1 – 1A – 2 – 3p/3s – 5 - Finish

Note1: All indicated distances between marks are recommended: the shorter up to 9 Kn wind speed; the longest over 9 Kn and have to be balanced considering of the current an all other sea conditions to reach the time target of 45 minutes.

### COURSE TO BE SAILED

<i>Class</i>	<i>Course</i>
ILCA 7	Outerloop
ILCA 6	Innerloop

### COURSE NUMBERS

Course numbers will be displayed during the starting sequence for every class separately on a board on the port side of the starting vessel.

### MARKS

Mark 1,2,3p/3s,4p/4s, 5	will be yellow and/or orange cilinders
Mark 1A,	will be a smaller red cilinder
Starting marks	will be staffs displaying an orange flag on a buoy and on the start vessel .
Finish marks	will be staffs displaying a blue flag on a buoy and on the finish vessel.